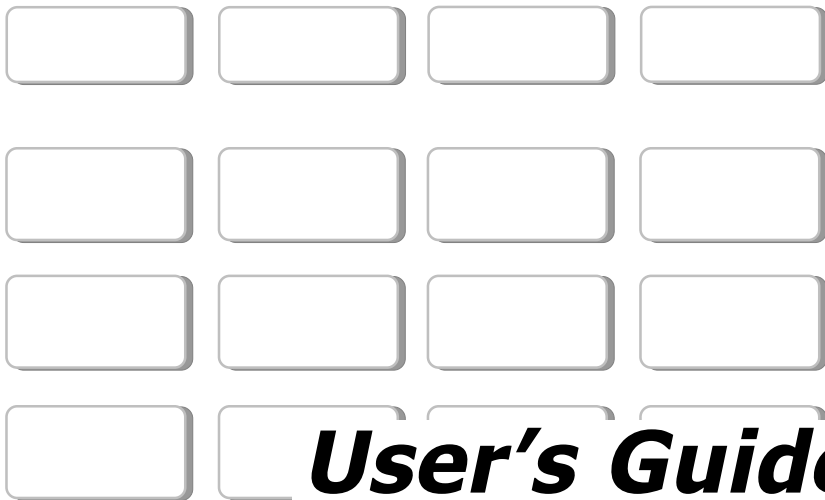


Security Command[®]

EXECUTIVE SERIES



User's Guide

Silencing an Alarm

All/Perimeter and Home/Away Systems

While the alarm bell or siren is sounding, enter your user code. The keypad displays **DISARM SILENCE**. Press the Select key under **SILENCE** to stop the bell or siren. This does NOT disarm the system.

Area Systems

While the alarm bell or siren is sounding, enter your user code. The system silences the alarm bell or siren.

What to do when a trouble tone is sounding

You can silence the trouble tone by pressing any one of the top row Select keys. This only silences the keypad and does not correct the condition that originally caused the problem.

Security Command® User's Guide

XR20 Command Processor™ Panels

Table of Contents

| Section | Page | Section | Page |
|---|-------------|---|-------------|
| About Your Security System | 1 | Extended Schedules | 21 |
| The Security Command Keypad | 2 | Date and Time | 21 |
| Special Security Command Messages | 3 | Display Events | 22 |
| Special Security Command Tones | 3 | Zone Activity Check Event Display | 22 |
| Understanding Security System Terms | 4 | Zone Bypass Event Displays | 23 |
| How your System Operates | 6 | Zone Event Displays | 23 |
| Area System Arming | 7 | Arming and Disarming Event Displays | 24 |
| Area System Disarming | 8 | User Check-in Event Displays | 24 |
| All/Perimeter System Arming | 9 | User Code Change Event Displays | 25 |
| All/Perimeter System Disarming | 10 | Supervisory Event Displays | 25 |
| Home/Away System Arming | 11 | System Monitor Event Displays | 26 |
| Home/Away System Disarming | 12 | Service Request? | 26 |
| Security Command User Menu | 13 | System Setup | 27 |
| User Check-in | 14 | Protection Areas | 27 |
| Zone Activity Check | 14 | Outputs | 27 |
| Sensor Reset | 15 | User Codes | 28 |
| Outputs On Off | 15 | Easy Entry™ User's Guide | 30 |
| Bypass Zones | 16 | FA113 User's Guide | 32 |
| Zone Monitor | 16 | Pager Direct™ User's Guide | 33 |
| System Test | 17 | PhoneAccess™ User's Guide | 35 |
| User Codes | 18 | 895 Voice Module | 36 |
| Ambush Codes | 20 | Common Keypad Displays | 37 |
| Schedules | 20 | | |

Emergency Evacuation Plans

The National Fire Protection Association recommends that you establish an emergency evacuation plan to safeguard lives in the event of a fire or other emergency. Use the following steps as a guide.

Draw a floorplan of your home or business

On a clean sheet of paper, draw the walls, windows, doors, and stairs. Also draw any obstacles that a person may encounter while exiting the building such as large furniture or appliances.

Develop escape routes

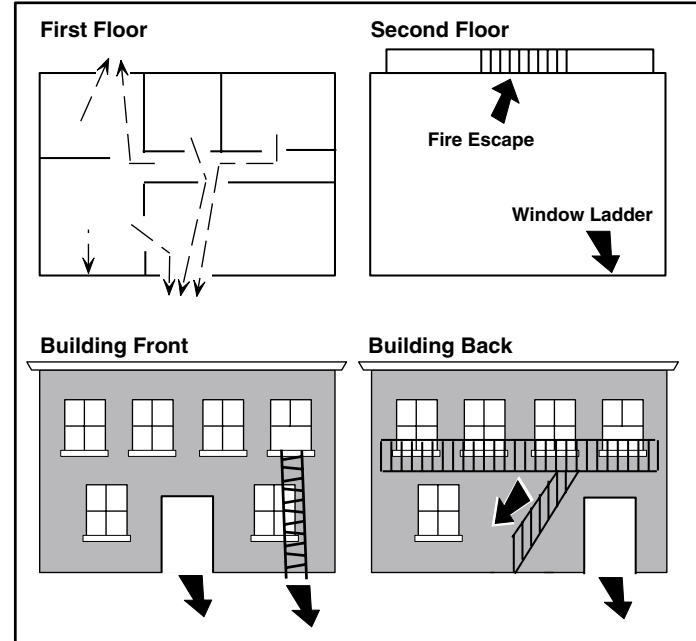
Determine at least two routes the occupants in each room can take to safely escape. One route can be the most obvious such as the door. Another can be through a window that can be easily opened. If the window is high off the ground, an escape ladder should be provided. Draw arrows on the floorplan to show escape routes from each room.

Decide where to meet

Prearrange a meeting place outside and away from where emergency personnel are likely to be working. A neighbor's house or across the street in the front of the house are good locations. Always perform a head count to make sure all occupants safely exited. **NEVER ENTER A BURNING BUILDING.** If the head count shows one or more persons missing, give this information immediately to the authorities. Never enter a building to look for someone.

Practice your escape plans

Devising an escape plan is only the beginning, before the plan can be effective everyone should practice the escape routes from each room.



Early detection

The best way to survive a fire or other emergency is to get out early. The installation of a fire alarm system, with smoke and carbon monoxide detectors in each room, can greatly decrease your risk of injury or loss.

Introduction

About Your Security System

Your Security Command system has been designed with your safety and comfort in mind. It uses the latest in computer technology to create the most user friendly security and fire system on the market today.

The system combines ease of use with a simple to understand Security Command keypad display to offer the full range of features requested by today's security system owners. Security Command can protect both the interior and perimeter of your home or business while you are away or just the perimeter when you are inside giving you a wall of security and peace of mind.

You can turn portions of your protection on or off at any time by pressing a few buttons. You can add, delete, and change personal user codes at any time or check the status of all protection devices in the system.

Parts of the System

There are two main parts to the Security Command system: the Security Command keypad and the keypad User Menu.

Security Command keypad

This is the device we have placed at certain locations throughout the premises that allows you to turn the system's protection on and off using your personal user code number.

Keypad User Menu

The keypad also supplies a User Menu containing all of the functions you need to fully operate your system, such as the ability to change a personal user code number.

A Note About False Alarms

One of the most important concerns facing the security industry today is false alarms. The accidental dispatching of police and fire agencies places others in jeopardy by limiting the response capability of those emergency service units.

As part of our commitment to reducing false alarms, we would like to encourage you to read this guide thoroughly. All the information contained here can help you quickly, and comfortably, learn the operation of the Security Command system. If you have any additional questions, or feel that you need more training, please do not hesitate to contact us.

Test Your System Weekly

It is recommended that you test the burglary portion of your system at least once each week. Testing should involve an active test of all doors, windows, and motion detectors connected to your system. If your system also has fire protection, call the service department to find out how this portion of your system should be tested.

Refer to the System Test section of this guide for instructions on testing the burglary portion of your system.

This page has been intentionally left blank

